

XT-SERIES

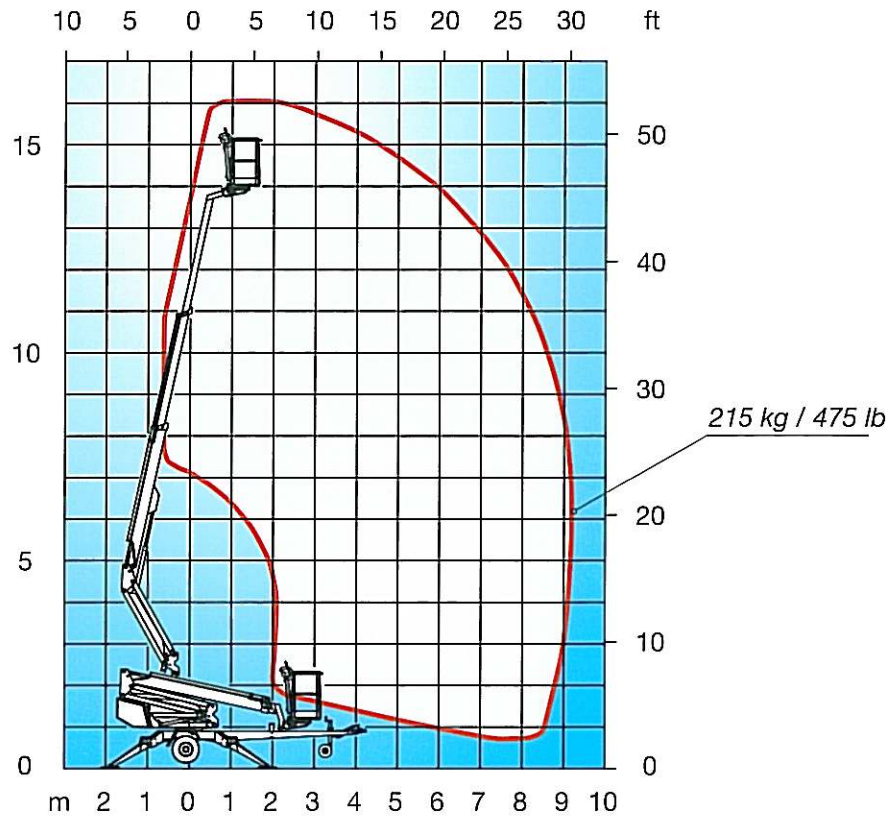


**DINO 160XT**

**DINO lift**

# DINO 160XT

## TECHNICAL SPECIFICATION



Working height	16.0 m	52'5"
Platform height	14.0 m	45'10"
Outreach	9.1 m	29'10"
Support width	3.8 m	12'6"
Lifting capacity	215 kg	475 lb
Basket size	0.7 m x 1.3 m	2'4" x 4'3"
Boom rotation	continuous	continuous
Basket rotation	90°	90°
Boom control	proportional	proportional
Transport length	5.99 m	19'8"
Transport width	1.80 m	5'11"
Transport height	2.29 m	7'6"
Weight	1960 kg	4320 lb
Driving system	standard	standard
AC-socket in the basket x 2	standard	standard
Petrol power pack	optional	optional
Diesel power pack	optional	optional
Electro motor	standard	standard
Gradeability	25%	25%

The specification is subject to change without prior notice.

## DINO Lift

**Dinolift Oy**  
 Raikkolantie 145, FI-32210 Loimaa  
 Finland  
 Tel. +358 2 762 5900  
 Fax+358 2 762 7160  
 dino@dinolift.com  
 www.dinolift.com

DINO® ACCESS

DINO® SAFETY

DINO® MOVEABILITY

DINO® STABILITY